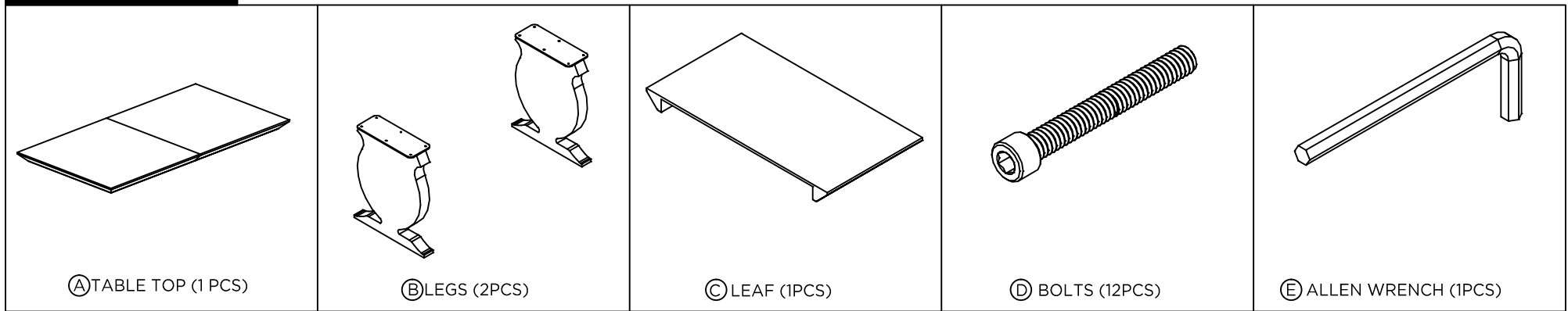


# ASSEMBLY INSTRUCTIONS FOR PORTO DINING TABLE (POR-375)

## WHAT'S INCLUDED



- 1** - Unpack all parts and hardware carefully.  
- Place table top (A) upside down on soft surface. (soft pad, clean moving blanket as an example)  
- Place 2 leg (B) upside down align holes.

- 2** - Insert bolts (D) into holes.  
- Using allen wrench (E) tighten bolts.  
- Check all connections make sure they are tight.

- 3** - Carefully lift table unit and rotate to upright position.  
- To install leaf spread table apart.  
- Place leaf making sure dowels on edge align with holes push table together.

